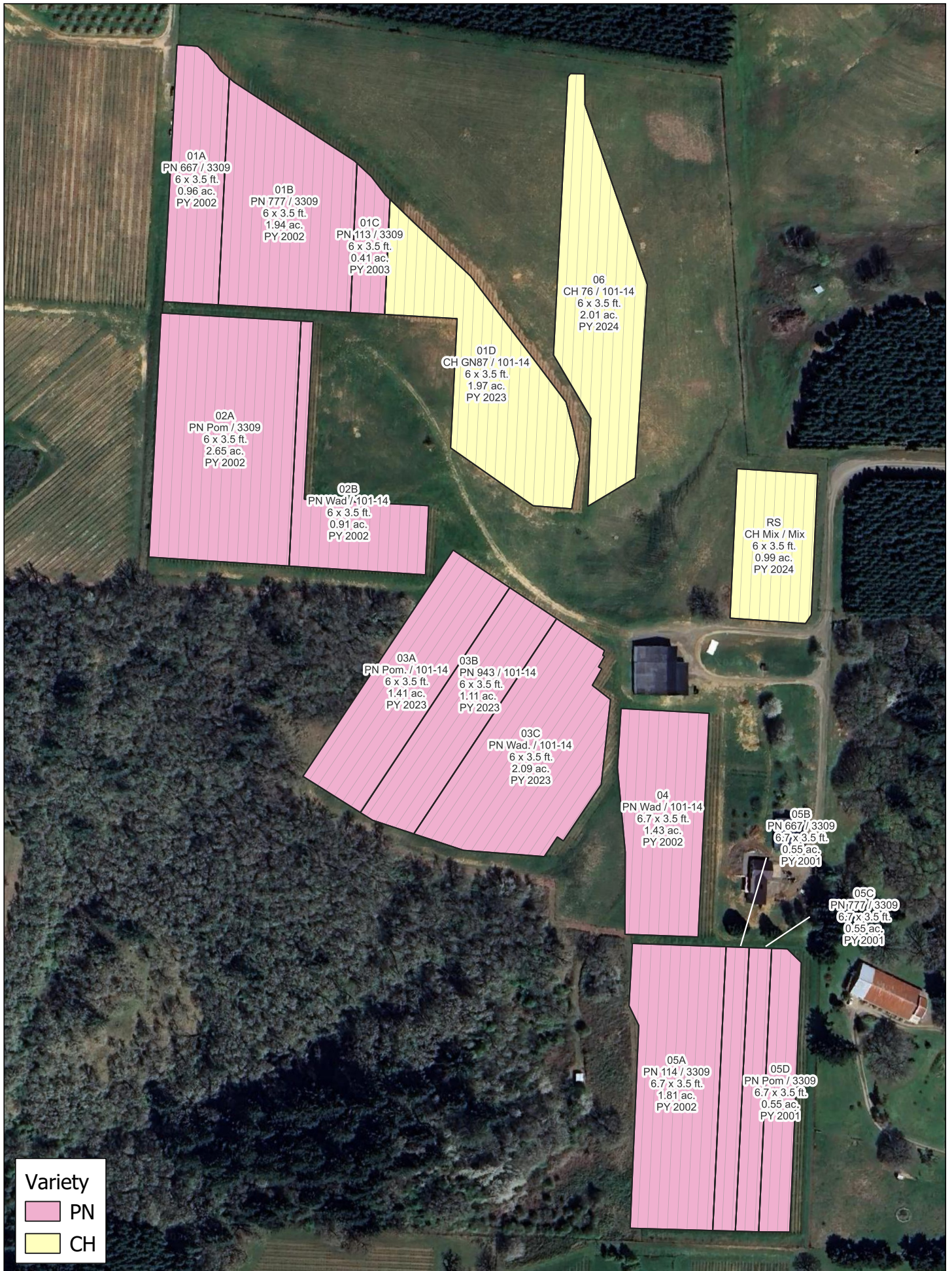


Nash Vineyard

13587 NE Doe Ridge Rd, Yamhill, OR 97148



01A
PN 667 / 3309
6 x 3.5 ft.
0.96 ac.
PY 2002

01B
PN 777 / 3309
6 x 3.5 ft.
1.94 ac.
PY 2002

01C
PN 113 / 3309
6 x 3.5 ft.
0.41 ac.
PY 2003

06
CH 76 / 101-14
6 x 3.5 ft.
2.01 ac.
PY 2024

01D
CH GN87 / 101-14
6 x 3.5 ft.
1.97 ac.
PY 2023

02A
PN Pom / 3309
6 x 3.5 ft.
2.65 ac.
PY 2002

02B
PN Wad / 101-14
6 x 3.5 ft.
0.91 ac.
PY 2002

RS
CH Mix / Mix
6 x 3.5 ft.
0.99 ac.
PY 2024

03A
PN Pom. / 101-14
6 x 3.5 ft.
1.41 ac.
PY 2023

03B
PN 943 / 101-14
6 x 3.5 ft.
1.11 ac.
PY 2023

03C
PN Wad. / 101-14
6 x 3.5 ft.
2.09 ac.
PY 2023

04
PN Wad / 101-14
6.7 x 3.5 ft.
1.43 ac.
PY 2002

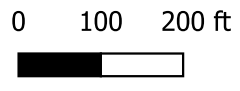
05B
PN 667 / 3309
6.7 x 3.5 ft.
0.55 ac.
PY 2001

05C
PN 777 / 3309
6.7 x 3.5 ft.
0.55 ac.
PY 2001

05A
PN 114 / 3309
6.7 x 3.5 ft.
1.81 ac.
PY 2002

05D
PN Pom / 3309
6.7 x 3.5 ft.
0.55 ac.
PY 2001

Variety	
	PN
	CH



Block Map 05-28-24
Acreage: PN: 16.37; CH: 4.97; Ttl: 21.34